

MONTHLY MEMBERSHIP PROGRESS REPORT

LOCATION JAMAICA

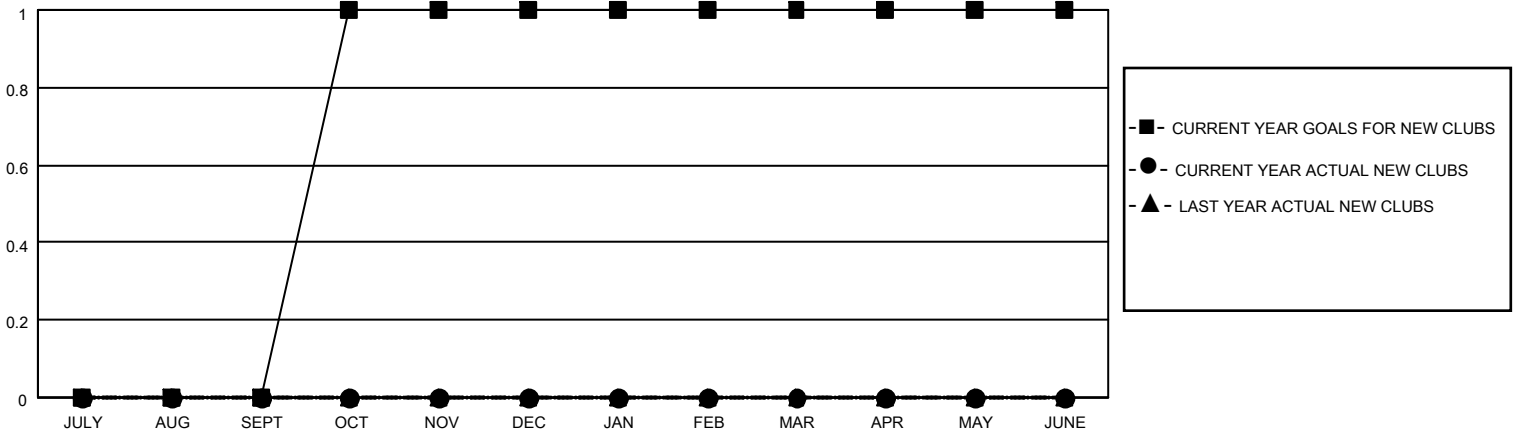
District 60 B

Results as of: 5/31/2021

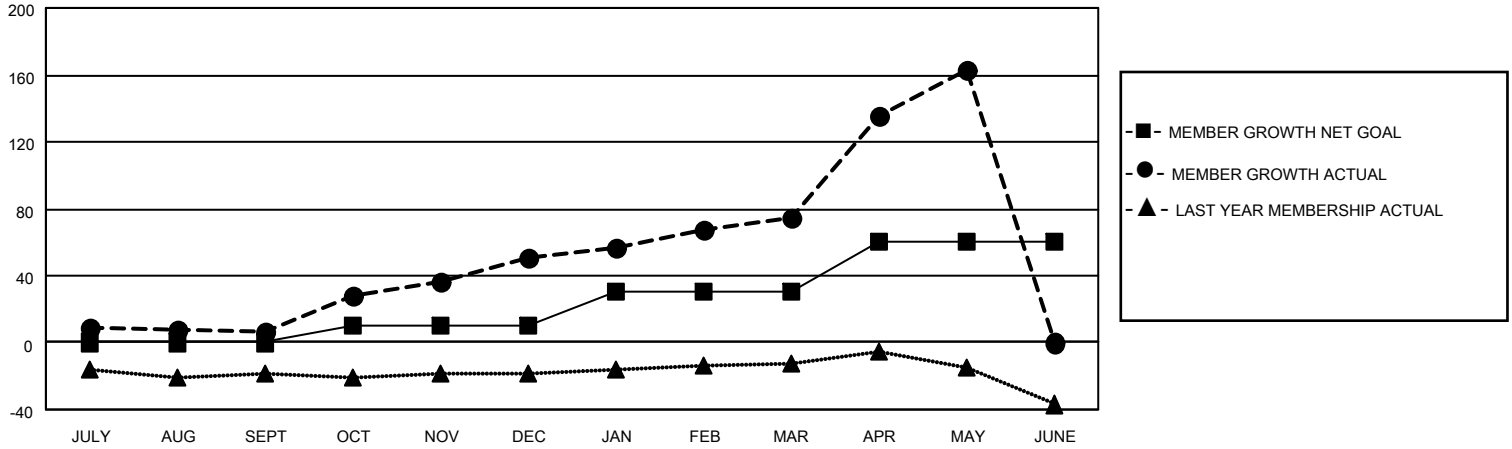
Clubs			
RESULTS FOR 2020-2021			
QUARTER	NEW CLUB GOAL	NEW CLUBS	DROPPED CLUBS
JULY/AUG/SEPT	0	0	0
OCT/NOV/DEC	1	0	0
JAN/FEB/MAR	0	0	0
APR/MAY/JUNE	0	0	0

Members			
RESULTS FOR 2020-2021			
QUARTER	MEMBER GROWTH NET GOAL	MEMBER GROWTH ACTUAL	DROPPED MEMBERS ACTUAL (including transfers)
JULY/AUG/SEPT	0	24	16
OCT/NOV/DEC	10	72	26
JAN/FEB/MAR	20	39	15
APR/MAY/JUNE	30	104	15

GOALS AND ACTUAL NEW CLUBS CUMULATIVE



GOALS AND ACTUAL MEMBERS CUMULATIVE



DROPPED CLUBS: 0

43 CLUBS OF 60 ADDED 1 OR MORE NEW MEMBERS

GENDER DISTRIBUTION

MALE 781 (39.17%)
FEMALE 1,213 (60.83%)

DROPPED MEMBERS

DECEASED	20
CLUB CANCELLED	0
OTHER	52
TOTAL	72

[CLICK HERE FOR CUMULATIVE MEMBERSHIP DATA](#)

TOTAL FAMILY UNIT MEMBERS	74
FAMILY MEMBERS PAYING HALF DUES	39